

# WRAPPED IN HOPE

A COLLABORATIVE PROJECT

## Confidential Healthcare & Chemical Dependency Support

*Pregnancy Through One Year Post-partum*

Keeping drug-affected families together and healthy!



## KEY PLAYERS

- 👉 St. Luke Hospital, Ronan
- 👉 Providence St. Joseph Medical Center, Polson
- 👉 Polson Health (KRMC)
- 👉 CSKT Tribal Health Department
- 👉 Lake County Public Health
- 👉 Child Protective Services
  
- 👉 Funded by Montana Health Care Foundation



# HOW IT ALL STARTED...

## 👉 Best Beginnings, 2012

- ❖ Organizations that serve children noted an increase need for services to children with learning and behavior issues.

## 👉 Hope Project, 2013

- ❖ Snuggle Me Project, Maine

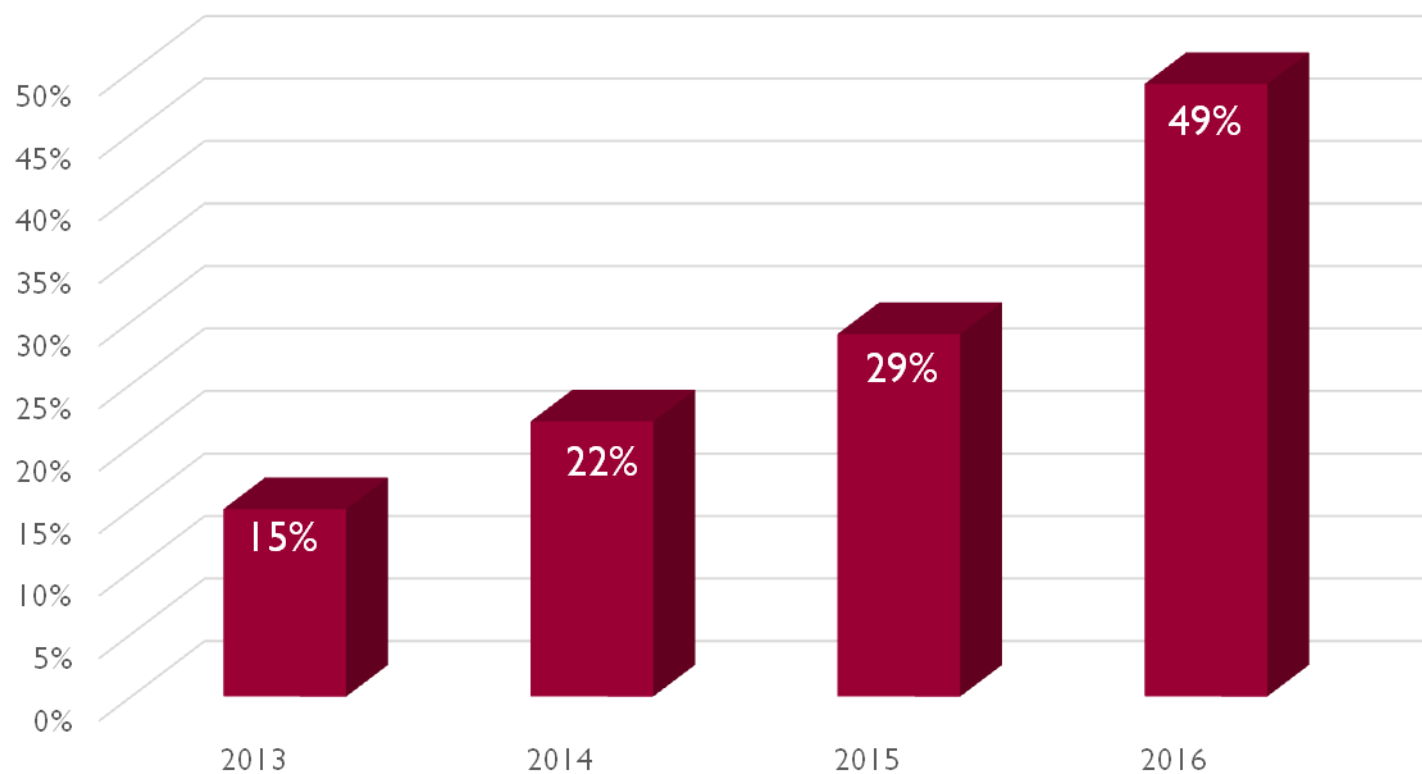
- ❖ <https://www1.maine.gov/dhhs/mecdc/documents/SnuggleME-Project.pdf>

## 👉 Wrapped in Hope, 2016

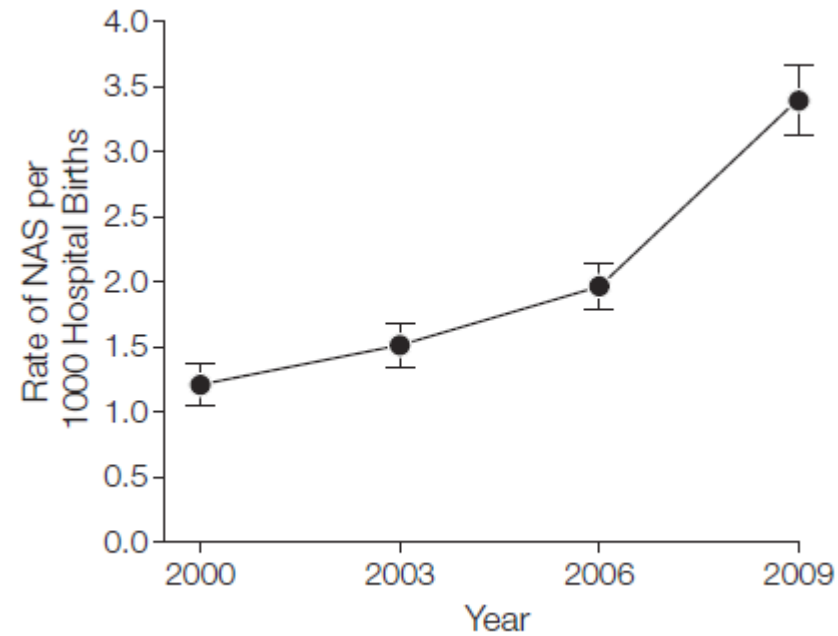


## THE DATA

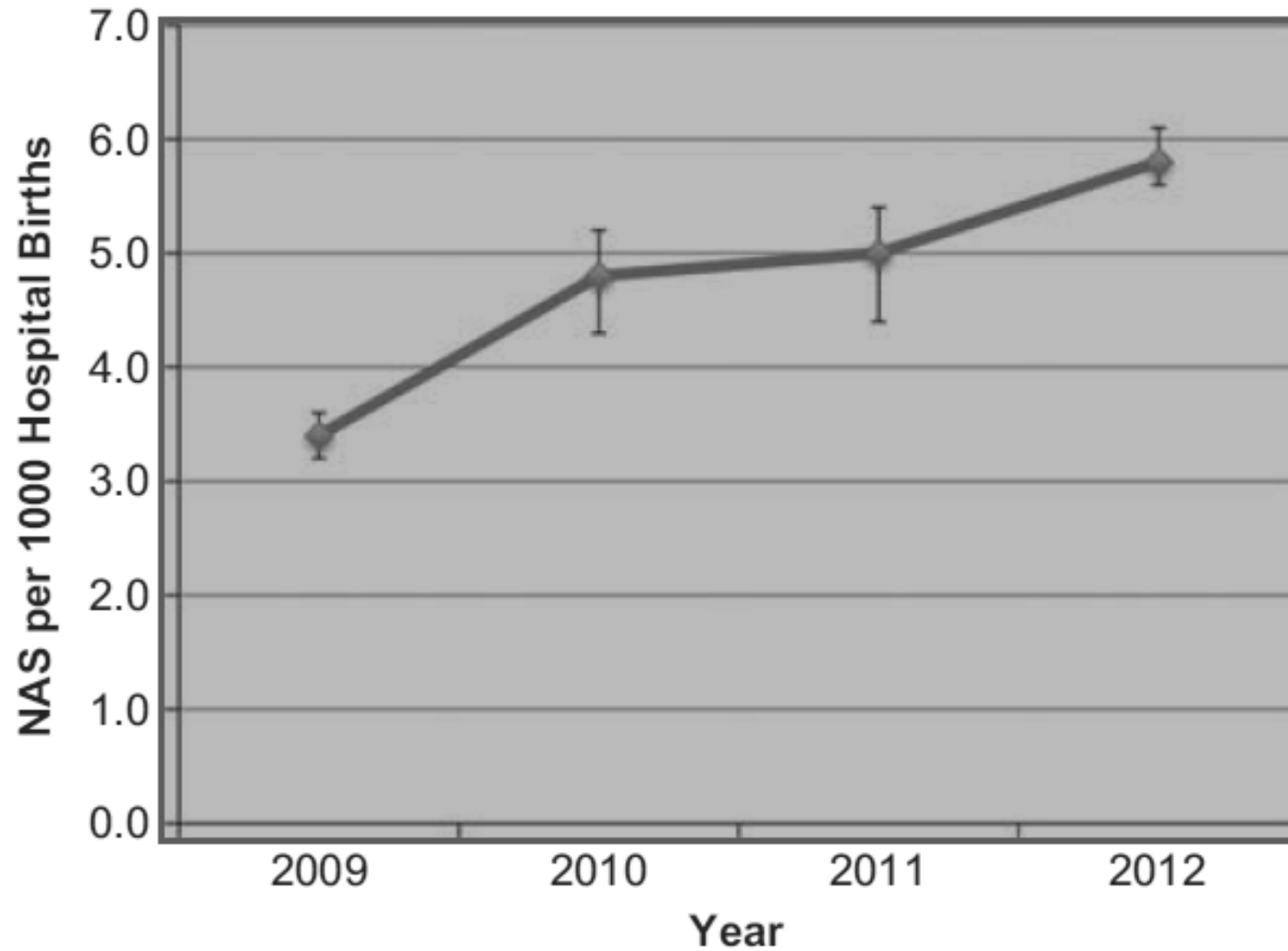
👉 In 2013, both hospitals began collecting data about newborns at risk for neonatal abstinence



# INCIDENCE OF NEONATAL ABSTINENCE NATIONALLY



# COST



2009: \$731,841,300

2012: \$1,449,389,600



# NEONATAL ABSTINENCE SYNDROME (NAS)

- 👋 High pitched, often continuous cry
- 👋 Irritability
- 👋 Increased muscle tone
- 👋 Tremors
- 👋 Vomiting and diarrhea
- 👋 Frantic sucking but poor feeding
- 👋 Seizures



# DEVELOPMENTAL OUTCOMES

## 👋 Variable results

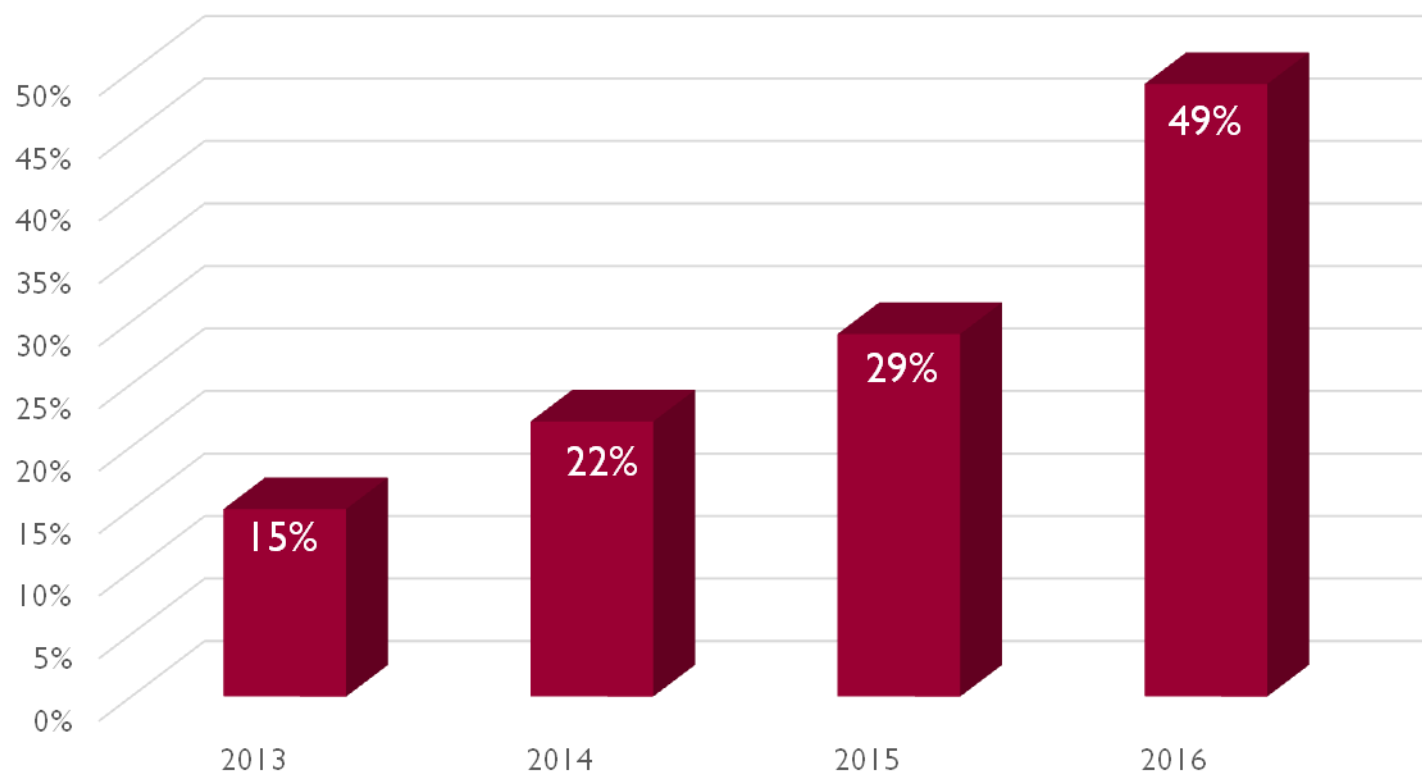
- ❖ Most suggest little to no difference through 2 years
- ❖ May have delayed cognitive functioning in preschool
- ❖ School age outcomes
  - Lower verbal ability; impaired reading and math skills
  - No cognitive delay at 6-13 years
  - More ADHD and disruptive behavior
  - More anxiety and aggression





## THE DATA

👋 In 2013, both hospitals began collecting data about newborns at risk for neonatal abstinence



## WHO DOES THIS REPRESENT?

- 👉 Moms using illicit substances in pregnancy
- 👉 Moms using narcotics illicitly
- 👉 Moms with chronic painful conditions being prescribed chronic narcotics
- 👉 Moms who are in opiate treatment programs and on chronic maintenance therapy



# DRUG AFFECTED PREGNANCY STATISTICS IN 2015

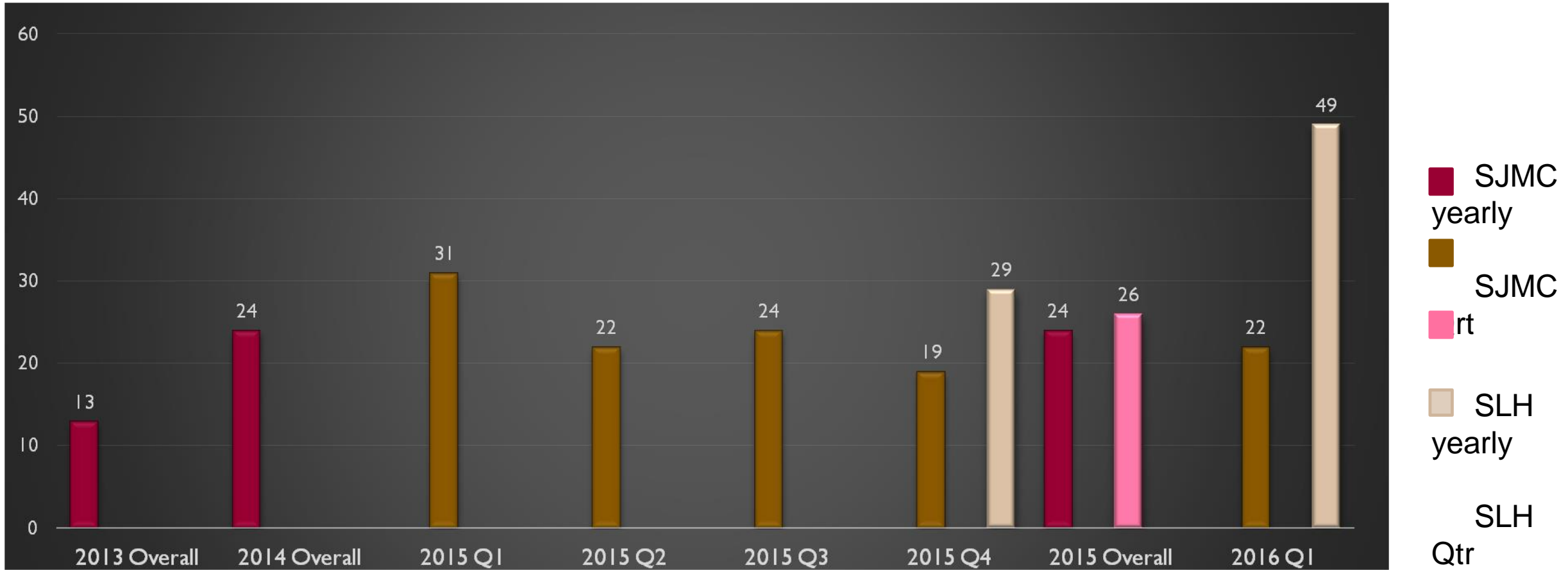
## Providence St. Joseph Medical Center

- 👉 Total Deliveries: 139
- 👉 Positive Drug Screens at Delivery: 33/139 (24%)
- 👉 Babies Transferred to NICU for NAS: 10/33 (30%)
- 👉 IHS Beneficiaries: 21/33 (64%)
- 👉 Most Common Substances:
  - ❖ Marijuana (64%)
  - ❖ Opiates (30%)
  - ❖ Methamphetamines (18%)
  - ❖ Poly-substance Use (30%)
- 👉 CPS contacted: 23/33 (79%)
- 👉 Insufficient Prenatal Care: 14/33 (42%)

## St. Luke Community Healthcare

- 👉 Total Deliveries: 140
- 👉 Positive Drug Screens at Delivery: 37/140 (26%)
- 👉 Babies Transferred to NICU for NAS: 6/37 (16%)
- 👉 IHS Beneficiaries: 26/37 (70%)
- 👉 Most Common Substances:
  - ❖ Marijuana
  - ❖ Opiates
  - ❖ Methamphetamines (14%)
- 👉 CPS contacted: 8/37 (22%)





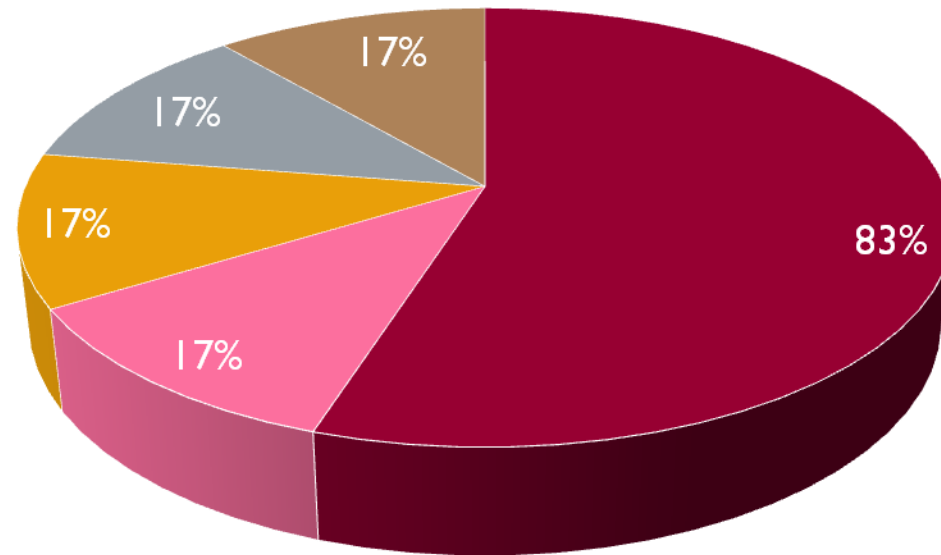
Comparisons/Trends



in Drug Affected Pregnancy Rates

# DRUG USE BY PERCENTAGE

SJMC 1st Qtr 2016

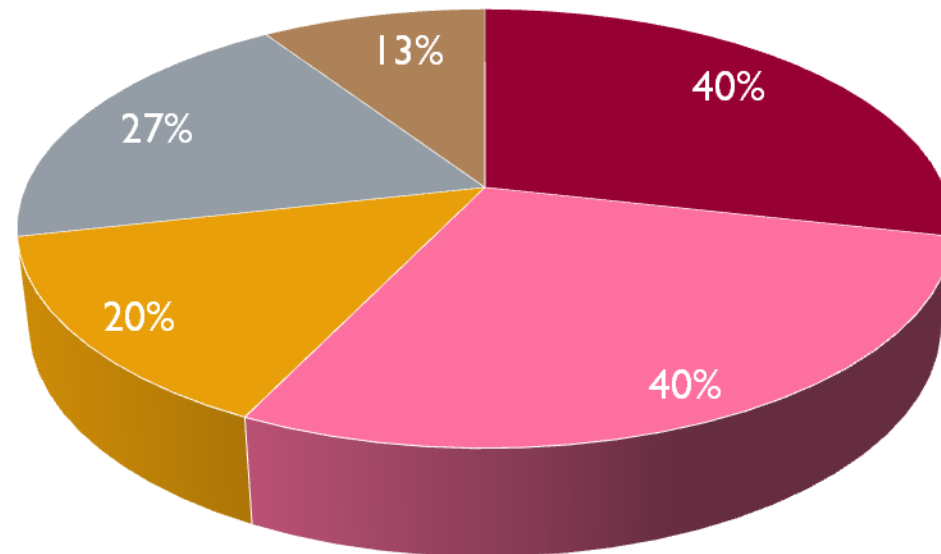


■ Marijuana ■ Methadone ■ TCA ■ Suboxone/Subutex ■ Opiates



# DRUG USE BY PERCENTAGE

SLH 1st Qtr 2016



■ Marijuana ■ Methamphetamines ■ TCA ■ Opiates ■ Benzos



# MARIJUANA USE

👉 **Exposure to marijuana during pregnancy alters neurobehavior in the early neonatal period.**

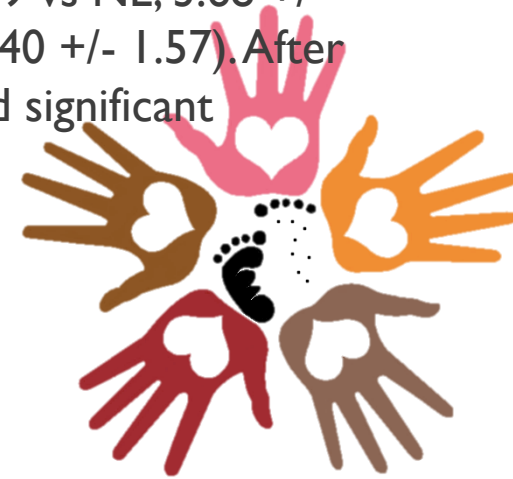
👉 **J. Pediatr.**

👉 Published December 1, 2006.

👉 Volume 149, Issue 6; Pages 781-7

👉 de Moraes Barros MC<sup>1</sup>, Guinsburg R, de Araújo Peres C, Mitsuhiro S, Chalem E, Laranjeira RR, .

👉 Of 3685 infants born in the study hospital, 928 (25%) were born to adolescent mothers. Of these, 561 infants met the inclusion criteria and were studied. Marijuana exposure was detected in 26 infants (4.6%). Infants exposed (E) or not exposed (NE) to marijuana differed in the following NNNS variables: arousal (E, 4.05 +/- 1.19 vs NE, 3.68 +/- 0.70), regulation (E, 5.75 +/- 0.62 vs NE, 6.04 +/- 0.72), and excitability (E, 3.27 +/- 1.40 vs NE, 2.40 +/- 1.57). After controlling for confounding variables, the effect of marijuana exposure on these scores remained significant



# MARIJUANA AND PREGNANCY OUTCOMES

## 👉 233: Cannabis in pregnancy: legal, but safe?

👉 Teresa Worstell, Margaret Gorman and Aaron Caughey

👉 American Journal of Obstetrics and Gynecology, 2015-01-01, Volume 212, Issue 1, Pages S129-S129, Copyright © 2015

### 👉 Study Design

👉 We studied a large retrospective cohort of pregnancies in California between the years 2005-2008. Using ICD-9 diagnosis codes, outcomes for a group of women exposed to cannabis in pregnancy were compared to a control group and statistically analyzed using chi squared test and adjusted odds ratios with 95% confidence intervals.

### 👉 Results

👉 When compared to control women, cannabis exposure in pregnancy was found to be significantly associated with higher rates of preeclampsia (4.14 vs 2.88%), preterm delivery (16.24 vs 8.89%), intrauterine fetal demise (0.23 vs 0.10%), infant death in the first year of life (0.64 vs 0.11%) and fetal anomalies (8.21 vs 6.38%). When adjusted odds ratios were examined, preterm delivery, infant death in the first year of life, and statistically significant increased odds in women who used cannabis in pregnancy (see table).



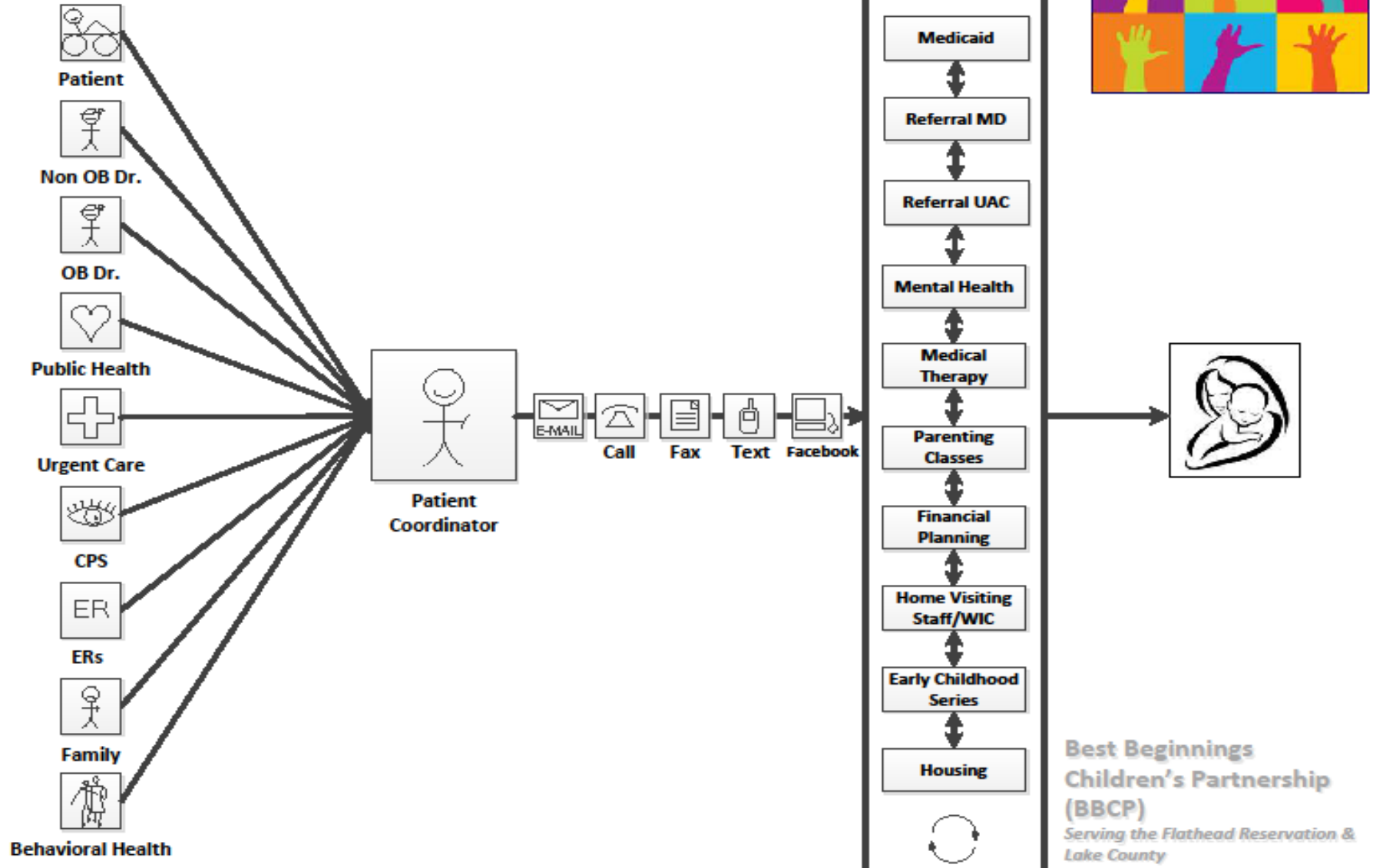


# WRAPPED IN HOPE...OUR GOALS

- ✎ To increase public awareness of the dangers of using substances illicitly while pregnant
- ✎ To educate moms in chronic maintenance programs (for pain and addiction treatment) about neonatal abstinence syndrome and its effects
- ✎ To encourage women who are using substances while pregnant to get prenatal care (dispel myths and provide support)
- ✎ Healthcare team education
  - ❖ Change terms that are used
    - Babies are not born “addicted”
    - Patients are not “clean” or “dirty”
  - How do we best support families



**Drug-Affected Pregnancy (Hope) Project: Patient Coordinator**  
08 April 2016



HOW WILL THIS WORK...

## PATIENT NAVIGATOR

**Connie Eleshuk**

Patient Navigator

Grandview Clinic 14th Ave W Polson, MT 59860

Cell/text: 406-871-7078

Email: [WrappedInHope2@gmail.com](mailto:WrappedInHope2@gmail.com)

Office hours vary – call or text in advance for appointments

*Confidential Healthcare & Chemical Dependency Support: Pregnancy through the first year*



# LICENSED ADDICTION COUNSELORS

🖐️ Shanley Nicolai, LCSW, LAC

❖ St Luke Community Healthcare

❖ (406) 528-5432

🖐️ Lorina Massey, APRN, MSN

❖ Providence St Joseph Hospital

❖ (406) 883-5377



## WHAT DOES THE LAC DO?

- 👉 Provide chemical dependency evaluation
- 👉 Provide co-delivered care in the clinic
- 👉 Refer to community and regional resources (inpatient, intensive outpatient, medical management)
- 👉 Assess for co-existing mental health disorders
- 👉 Function as a liason in the CPS/Judicial world



# WRAP AROUND CARE

👋 Relationships are being built with:

- ❖ CPS (tribal and county)
- ❖ Probation and parole (tribal and county)
- ❖ Judges (tribal and county)
- ❖ Tribal prosecutors
- ❖ Lake County prosecutors
- ❖ Safe Harbor
- ❖ Western Montana Addiction Services
- ❖ Sunburst Mental Health



## WHAT CAN THE PROJECT ACCOMPLISH?

- 👏 Community education about substance abuse in pregnancy to destigmatize the issue
- 👏 Tools to help providers have meaningful discussions with patients
- 👏 Education for parents of babies at risk of NAS
- 👏 Home visits for family support
- 👏 Volunteer peer support for families who choose to participate
- 👏 A forum for communication between patients, providers & CPS
- 👏 Standardization of language regarding substance use in pregnancy



## THE BIG “ASK”

- 👋 Universal screening for all pregnant women for alcohol, tobacco and drugs at any visit where pregnancy is recognized
- 👋 Consistent use of standardized, validated screening tool
- 👋 Referral to the program
- 👋 SBIRT





# THE SCREENING TOOL

## Wrapped in Hope Screening Tool

### Parents

Did any of your parents have a problem with alcohol or other drug use (cocaine, opiates, marijuana, heroin, methamphetamine, etc)?

YES

NO

### Peers

Do any of your friends have a problem with alcohol or other drug use (cocaine, opiates, marijuana, heroin, methamphetamine, etc)?

YES

NO

### Partners

Does your partner have a problem with alcohol or other drug use (cocaine, opiates, marijuana, heroin, methamphetamine, etc)?

YES

NO

### Violence

Are you feeling at all unsafe in any way in your relationship with your current partner?

YES

NO

### Emotional Health

Over the last few weeks, has worry, anxiety, depression or sadness made it difficult for you to do your work, get along with people or take care of things at home?


YES

NO



# THE REFERRAL FORM

**Wrapped In Hope**

  
Embracing Drug Affected Babies and their Families

**Request for Service**

NAME OF REFERER		PROFESSION			
REFERER'S AGENCY & ADDRESS		CONTACT TEL NO. / EMAIL			
CONVENIENT CONTACT TIME (Please state convenient day/time we can contact you)					
Re: (Client's Name)	DOB	Age	Estimated Due Date	Pre-Natal Care (y/n)	Ethnic Group
Main address of Client		Contact Telephone No.			
		Home (Landline): _____			
		Cell (Mobile): _____			
		Convenient Contact Time: _____			
PRIMARY PHYSICIAN:					
Consent to liaise with provider if appropriate to referral? Yes <input type="checkbox"/> No <input type="checkbox"/>					



## CONTACT INFORMATION

👤 Annesha Anderson, RNC, St. Luke Hospital

❖ 406-528-5318

❖ [aanderson@stlukehealthcare.org](mailto:aanderson@stlukehealthcare.org)

👤 Cara Harrop, MD, St. Luke Hospital

❖ 406-883-2555

❖ [charrop@stlukehealthcare.org](mailto:charrop@stlukehealthcare.org)

👤 Erin Rumelhart, DON, St. Joe's Hospital

❖ 406-883-5377

❖ [erin.rumelhart@providence.org](mailto:erin.rumelhart@providence.org)

👤 Jamie Straub, DO, St. Joe's Hospital

❖ 406-883-5377

❖ [jamie.straub@providence.org](mailto:jamie.straub@providence.org)

